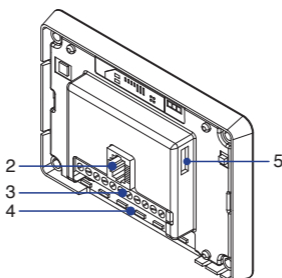
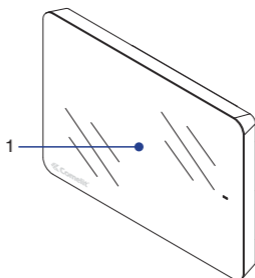


MiniTouch

Programmable thermostat

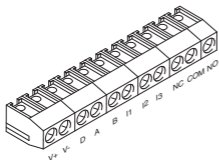
Installer Manual





- 1: Touch screen 3,5".
- 2: Connettore ethernet (per usi futuri).
- 3: Morsettiera di connessione.
- 4: Smart light.
- 5: Alloggiamento per scheda micro SD.

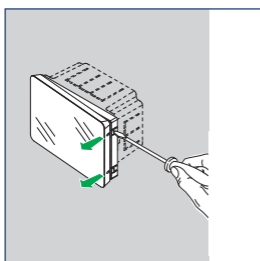
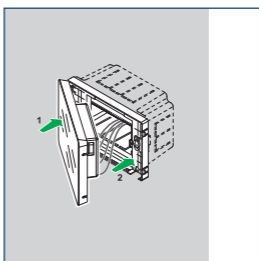
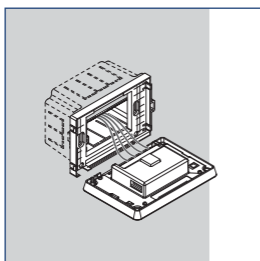
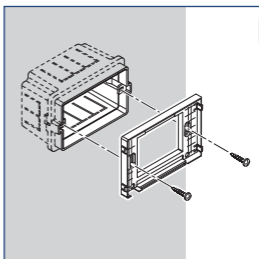
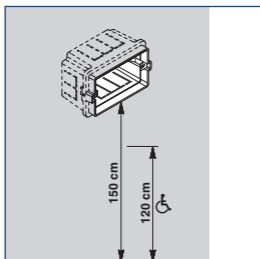
Descrizione morsettiera di connessione



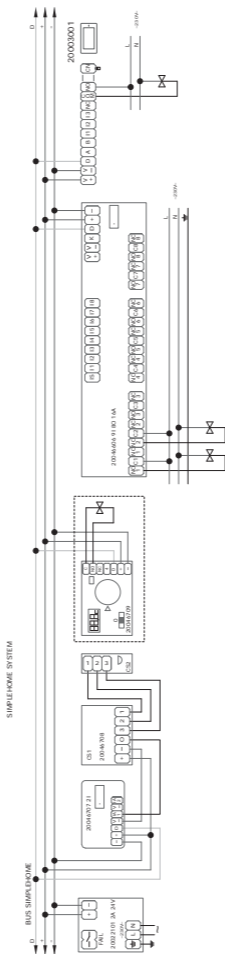
- V+ V-:** Morsetti alimentazione
- D:** morsetto Data del bus SimpleHome
- A B:** Non utilizzati
- NC COM NO:** Contatti puliti relè termostato
- I1 I2 I3:** Uscite Open Collector per collegamento Fan-coil a più velocità.

MONTAGGIO

IT

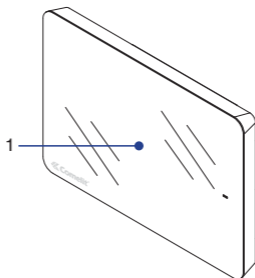


Esempio di collegamento del minitouch su un impianto con 3 zone clima (1 sonda di temperatura integrata nel modulo minitouch, 1 sonda di temperatura esterna, 1 termostato esterno)

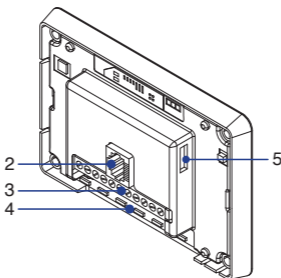


Caratteristiche principali	
Colore	Nero
Smart Light	Illuminazione a LED RGB
Display	Schermo a colori 3,5" Touch Screen (cm 7) con risoluzione 320x240 pixel
Angolo di visione (destra/sinistra/alto/basso)	50° / 50° / 45° / 50°
Alloggiamento per scheda micro SD	SI (utilizzato per il caricamento della configurazione dell'impianto domotico)
Alimentazione	• 12 Vdc / 24 Vdc
Corrente assorbita	355 mA @ 13,8 Vdc 175 mA @ 25 Vdc
Dimensione (HxLxP)	85 x 123 x 28,6 mm
Uscite O.C.	SI (500 mA MAX)
Uscita Relé	• 30 Vdc / 5 A • 250 Vac / 10 A
Temperatura di funzionamento	-15° / +55 ° C
Peso	150 gr
Termostato a bordo	SI
Fissaggio scatola 503 - 503E o similari	SI
Porta ethernet	SI (Per usi futuri)

Per informazioni complete vedi:
manuale utente www.comelitgroup.com

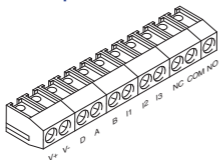


EN



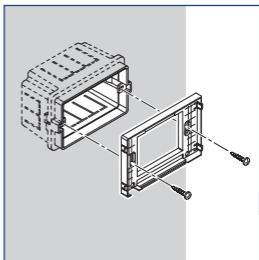
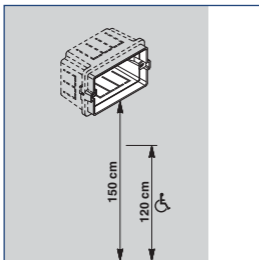
- 1: 3.5" touch screen.
- 2: Ethernet connector (for future uses).
- 3: Terminal block for connection.
- 4: Smart light.
- 5: Micro SD card slot.

Description of terminal block for connection.

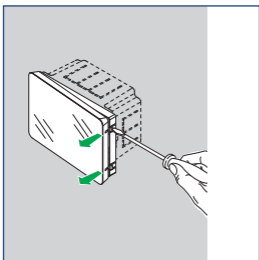
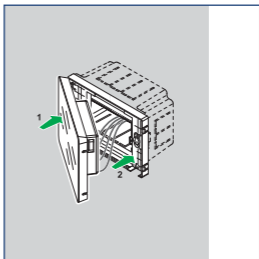
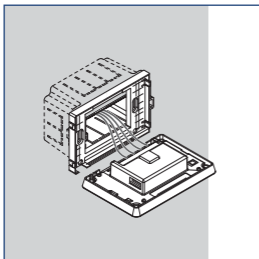


- V+ V-:** Power supply terminals
- D:** SimpleHome bus data terminal
- A B:** Not used
- NC COM NO:** Thermostat relay voltage-free contacts
- I1 I2 I3:** Open Collector outputs for multi-speed Fan-coil connection.

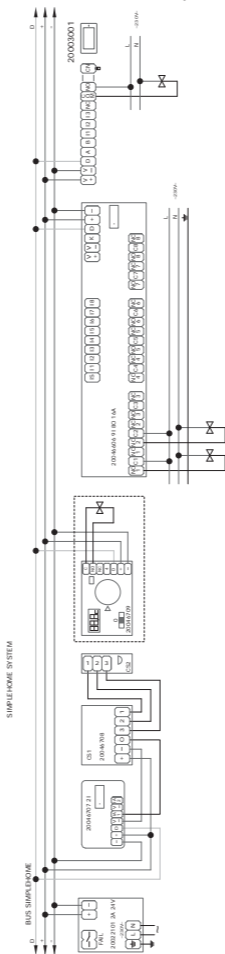
MOUNTING



EN



Minitouch connection example for a system with 3 climate zones (1 temperature sensor integrated into the Minitouch module, 1 external temperature sensor, 1 external thermostat)



DESCRIPTION

Main features	
Colour	Black
Smart Light	RGB LED illumination
Display	3.5" (7 cm) colour touch screen with 320x240 pixel resolution
Viewing angle (right / left / high / low)	50° / 50° / 45° / 50°
Micro SD card slot	YES (used for loading the home automation system configuration)
Power supply	• 12 Vdc / 24 Vdc
Current absorption	355 mA @ 13.8 Vdc 175 mA @ 25 Vdc
Size (HxWxD)	85 x 123 x 28.6 mm
O.C. outputs	YES (500 mA MAX.)
Relay output	• 30 Vdc / 5 A • 250 Vac / 10 A
Operating temperature	-15° / +55°C
Weight	150 g
On-board thermostat	YES
Mounting of box 503 - 503E or similar	YES
Ethernet port	YES (for future uses)

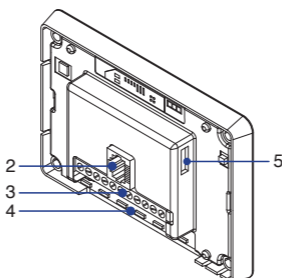
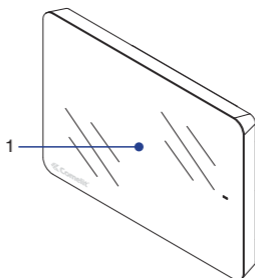
EN

For full information see:
user manual www.comelitgroup.com

Products Catalogues Technical manuals FAQs Data Sheet

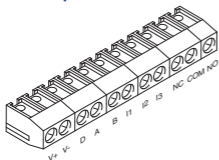
Minitouch

GO



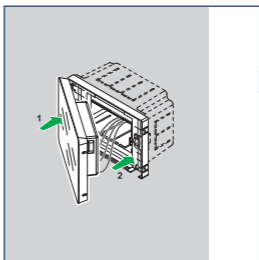
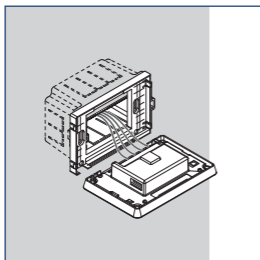
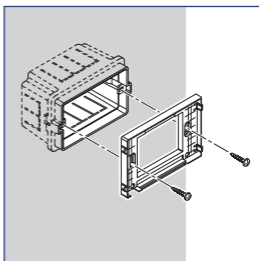
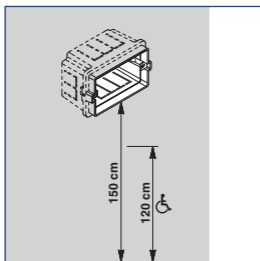
- 1 : Écran tactile 3,5".
 2 : Connecteur Ethernet (pour utilisations futures).
 3 : Bornier.
 4 : Smart light.
 5: Emplacement pour carte micro SD.

Description du bornier

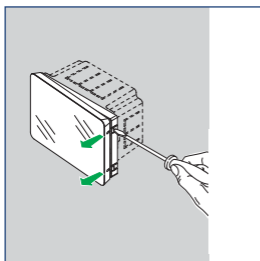


- V+ V-**: bornes d'alimentation
D: borne du bus de données SimpleHome
A B: Libres
NC COM NO: Contacts secs relais thermostat
I1 I2 I3: Sorties Open Collector pour raccordement Fan-coil à plusieurs vitesses.

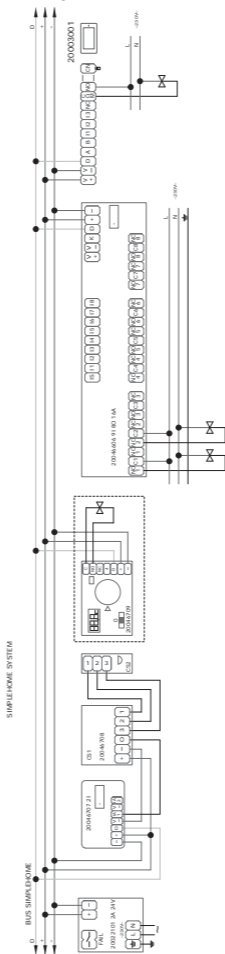
MONTAGE



FR

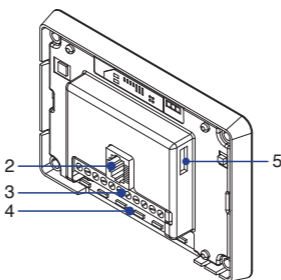
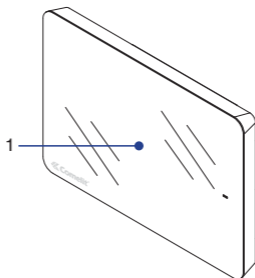


Exemple de connexion du minitouch sur une installation avec 3 zones chauffage (1 sonde de température intégrée dans le module minitouch, 1 sonde de température extérieure, 1 thermostat extérieur)



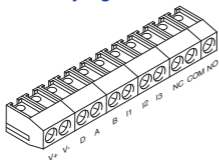
Principales caractéristiques	
Couleur	Noir
Smart Light	Éclairage à leds RJB
Écran	Écran tactile couleur 3,5" (7 cm) résolution de 320x240 pixels
Angle de vision (droite/ gauche/haut/bas)	50° / 50° / 45° / 50°
Emplacement pour carte micro SD	OUI (utilisé pour télécharger la configuration de l'installation domotique)
Alimentation	• 12 Vdc / 24 Vdc
Courant absorbé	355 mA à 13,8 Vcc 175 mA à 25 Vcc
Dimensions (HxLxP)	123 x 85 x 28,6 mm
Sorties O.C.	OUI (500 mA MAX)
Sorties à relais	• 30 Vcc / 5 A • 250 Vca / 10 A
Température de fonctionnement	-15° / +55 ° C
Poids	150 g
Thermostat à bord	OUI
Fixation boîtier 503 - 503E ou similaires	OUI
Port Ethernet	OUI (Pour utilisation futures)

Pour des informations complètes se référer au:
user manual www.comelitgroup.com



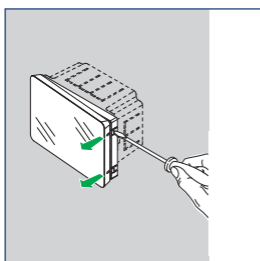
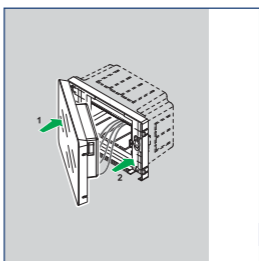
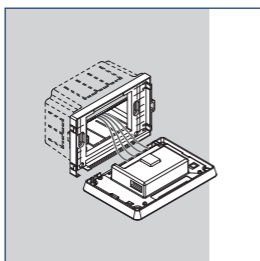
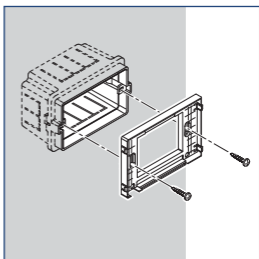
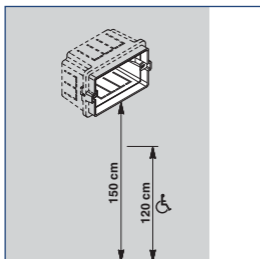
- 1: Touchscreen van 3,5".
- 2: Ethernet-connector (voor toekomstig gebruik).
- 3: Aansluitblok
- 4: Smart light.
- 5: Behuizing voor micro SD-kaart.

Beschrijving aansluitblok

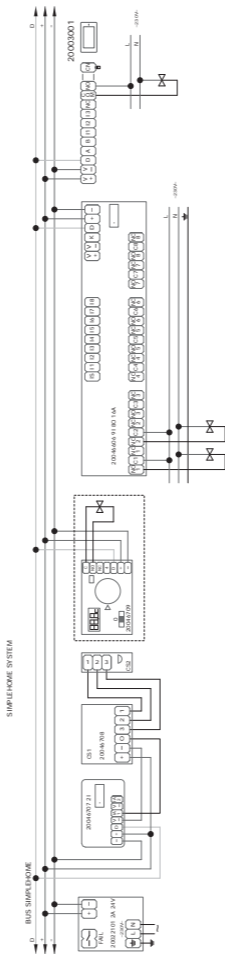


- V+ V-**: Voedingsklemmen
- D**: Data-klem van de SimpleHome-bus
- A B**: Niet gebruikt
- NC COM NO**: Spanningsvrije contacten
thermostaatrelais
- I1 I2 I3**: Open Collector uitgangen voor
aansluiting Fan-coil met meerdere
snelheden.

MONTAGE

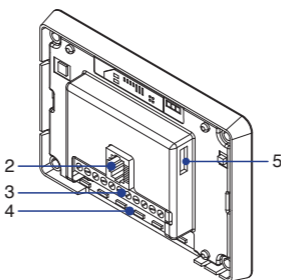
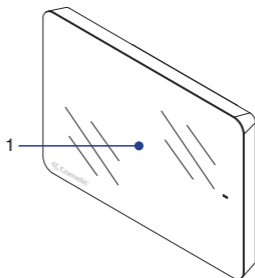


Voorbeeld van aansluiting van de Minitouch op een installatie met 3 klimaatzones (1 in de Minitouch-module ingebouwde temperatuursensor, 1 externe temperatuursensor, 1 externe thermostaat)



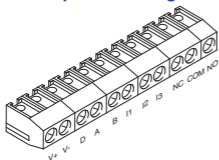
Belangrijkste kenmerken	
Kleur	Zwart
Smart Light	Verlichting met RGB-led's.
Display	Kleurenscherm van 3,5" Touchscreen (7 cm) met resolutie van 320x240 pixel
Gezichtshoek (rechts/links/boven/onder)	50° / 50° / 45° / 50°
Behuizing voor kaart micro SD	JA (gebruikt voor het laden van de configuratie van de huisautomatiseringsinstallatie)
8278I	• 12 Vdc / 24 Vdc
Opgenomen stroom	355 mA bij 13,8 Vdc 175 mA bij 25 Vdc
Afmetingen (HxLxD)	85 x 123 x 28,6 mm
Uitgangen O.C.	JA (500 mA MAX)
Relaisuitgang	• 30 Vdc / 5 A • 250 Vac / 10 A
Bedrijfstemperatuur	-15° / +55 ° C
Gewicht	150 gr
Met thermostaat	JA
Bevestiging doos 503 - 503E of dergelijke	JA
Ethernet-poort	JA (voor toekomstig gebruik)

Voor volledige informatie de user manual www.comelitgroup.com raadplegen



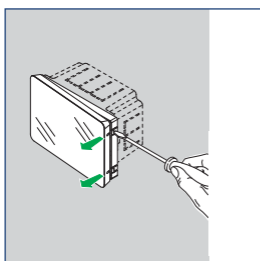
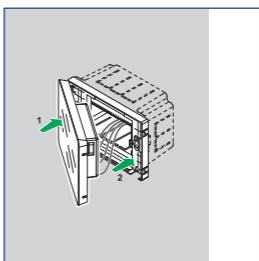
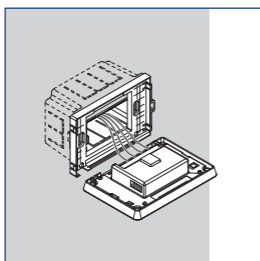
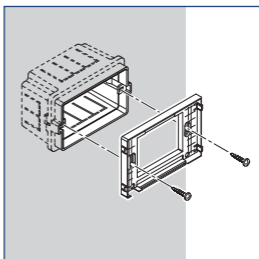
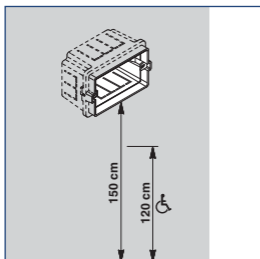
- 1: Pantalla táctil de 3,5".
- 2: Conector Ethernet (para usos futuros).
- 3: Regleta de conexiones.
- 4: Smart light.
- 5: Alojamiento para tarjeta micro SD.

Descripción de la regleta de conexiones

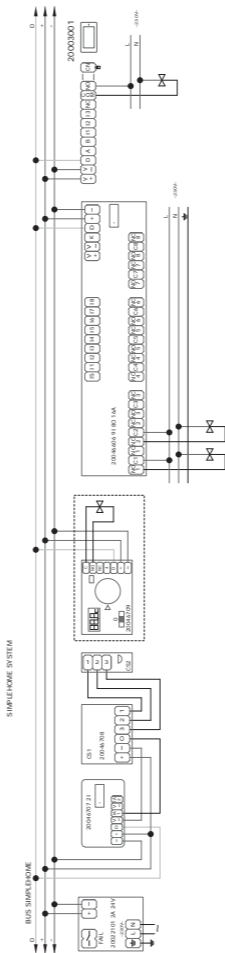


- V+ V-:** Bornes de alimentación
- D:** Borne datos del bus SimpleHome
- A B:** No utilizados
- NC COM NO:** Contactos libres de potencial para relé del termostato
- I1 I2 I3:** Salidas de colector abierto para la conexión de un fan-coil de varias velocidades.

MONTAJE



Ejemplo de conexión del Minitouch a una instalación con 3 zonas climáticas (1 sonda de temperatura integrada en el módulo Minitouch, 1 sonda de temperatura externa, 1 termostato externo)



DESCRIPCIÓN

Características principales	
Color	Negro
Smart Light	Iluminación con led RGB
Pantalla	Pantalla táctil en color de 3,5" (7 cm) con resolución de 320x240 píxeles
Ángulo de visión (derecho/ izquierdo/alto/ bajo)	50° / 50° / 45° / 50°
Alojamiento para tarjeta micro SD	SÍ (utilizado para cargar la configuración del sistema domótico)
Alimentación	• 12 Vdc / 24 Vdc
Corriente absorbida	355 mA @ 13,8 Vcc 175 mA @ 25 Vcc
Dimensiones (HxLxP)	123 x 85 x 28,6 mm
Salida de colector abierto	SÍ (500 mA MÁX.)
Salida relé	• 30 Vcc / 5 A • 250 VcA / 10 A
Temperatura de funcionamiento	-15° / +55 ° C
Peso	150 g
Termostato incorporado	SÍ
Fijación en caja 503 - 503E o similares	SÍ
Puerto Ethernet	SÍ (para usos futuros)

Para mayor información véase el:
user manual www.comelitgroup.com

Products Catalogues Technical manuals FAQs Data Sheet

Minitouch

GO

ES

NOTE



www.comelitgroup.it



 **Comelit**[®]
Passion and Innovation

1° edizione 12/2012 cod. 2G40000764