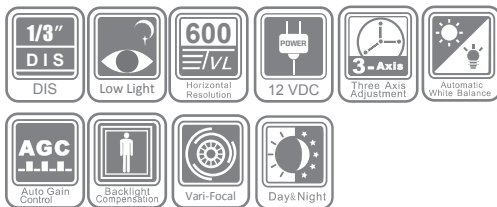


DS-2CE5582P(N)-VF

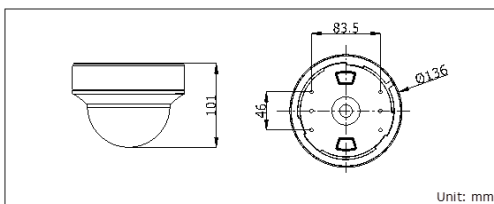
600 TVL DIS Indoor Vari-focal Dome Camera



Key features

- 1/3" DIS
- Electronic Day/Night
- 600 TVL horizontal resolution
- 2.8 ~ 12mm vari-focal lens
- Wide operating temperature range

Dimensions



DS-2CE5582P(N)-VF	
Camera	
Image Sensor	1/3" DIS
Signal System	PAL/NTSC
Effective Pixels	720 (H) × 480 (V)
Min. Illumination	0.1 Lux @ (F1.2, AGC ON) 0.14 Lux @ (F2.0, AGC ON)
Shutter speed	PAL: 1/25 s to 1/15,000 s NTSC: 1/30 s to 1/15,000 s
Lens	2.8-12mm @ F1.4
	Angle of view: 80°-27.2°
Lens Mount	φ14
Angle Adjustment	Pan: 0 - 360°, Tilt: 0 - 75°, Rotation: 0 - 360°
Day & night	Electronic
Horizontal Resolution	600 TVL
Synchronization	Internal synchronization
Video Output	1Vp-p composite output (75 Ω/BNC)
S/N Ratio	More than 52 dB
General	
Working Temperature/ Humidity	-40 °C - 60 °C (-40 °F - 140 °F) Humidity 90% or less (non-condensing)
Power Supply	12 V DC
Power Consumption	Max. 1 W
Dimensions	Φ 136 × 101 mm (Φ 5.35" × 3.98")
Weight	500g

Available models

PAL: DS-2CE5582P-VF
NTSC: DS-2CE5582N-VF

Accessories



DS-1229ZJ
(Vandal-proof wall mount)

DS-1238ZJ
(Pendant Mount)

DS-1249ZJ
(In-ceiling Mount)