

# **LINEA RP/270 Hi-PoE MK II**

# **LINEA RP/270 Hi-PoE MK II PLUS**

**Hi-PoE MK II CAMERA HOUSING**  
**Patent Pending**

## **Hi Power over Ethernet Camera Housing,**

Hi-PoE MKII for IP Camera or Hi-PoE MKII PLUS for IP PoE Camera

Punch Down Terminal fast connection,

Weatherproof with Sealed RJ45 Connector

Heater with thermostat, Blower kit, Wall bracket RAL9002



### **FLIP TOP OPENING SYSTEM**

*For an immediate access to the camera,  
lenses and all the accessories*

### **DIFFERENT MOUNT OPTIONS**

*Wall mount, ceiling mount and with cable  
management*

### **USER FRIENDLY**

*All installation and maintenance operations  
are quick and easy to do.*

### **STURDY CONSTRUCTION**

*Entirely made of robust aluminium, it has the  
possibility to be vandal proof only by adding  
the vandal-proof glass accessory.*



**tekno system®**

Italian design for CCTV since 1979

**Tekno System S.p.A.**

Via Rostoncello, 1 - 36010 Carrè - Italy

Phone: +39 0445 314324 | Fax: +39 0445 314319

Email: [info@tekno-system.eu](mailto:info@tekno-system.eu) | Web: [www.tekno-system.eu](http://www.tekno-system.eu)

rev. 180211

Page 1 / 4

## TECHNOLOGY HIGHLIGHTS

All the new **HiPoE MKII** boards are equipped with both RJ45 and Punch Down Terminal fast connection systems offering the installer a choice of the most suitable solution.

Having selected to the fast connection, the installation is complete. The pre-assembled internal CAT5e with the RJ45 male plug termination makes this a real Plug & Play solution.

If you want to supply an IP (but not PoE) camera you must use the **HiPoE MKII** version; in this case you must use the two terminal blocks (output selectable +12VDC or 14.5VDC) and two wires from the splitter to the camera for the power supply and a separate CAT5e cable for the data.

This splitter, which is Gigabit compatible, improves the benefits of PoE technology and allows to overcome the power limit, managing up to 24 Watts.

The patented slide and hang system allows a wide and quick access to the housing's internal slide even in the most critical positions.



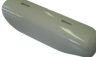
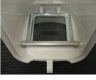

The housing is held by slide, bracket and swivel head, all in die-cast aluminium.

Accessories like heater with thermostat, blower with thermostat and double filter fan air circulation are factory installed.






If you want to supply directly a PoE camera (IEEE 802.3af compliant) with just one CAT5E cable from the splitter you must use the **HiPoE MKII Plus** version; in this case the two terminal blocks marked +POWER will be not used.

The Dedicated PoE camera module also caters for digital cameras that only allow PoE feed. (Available as a factory installed accessory only)

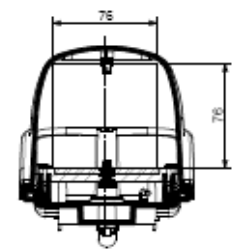
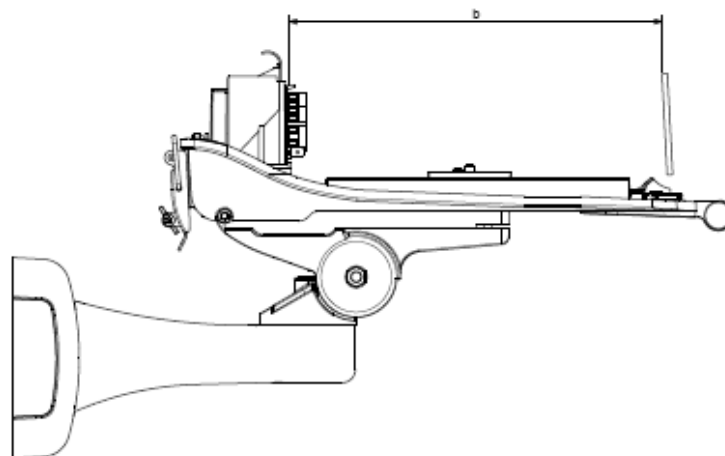
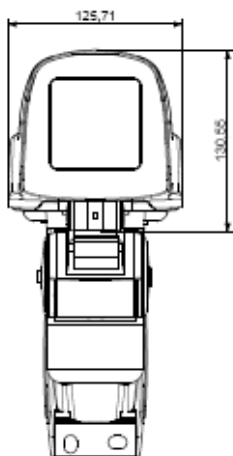
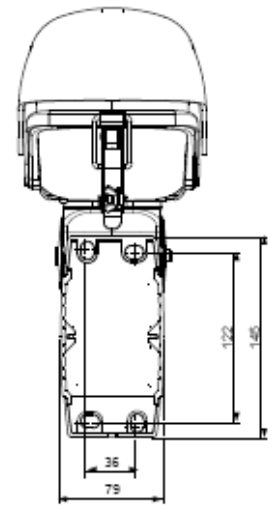
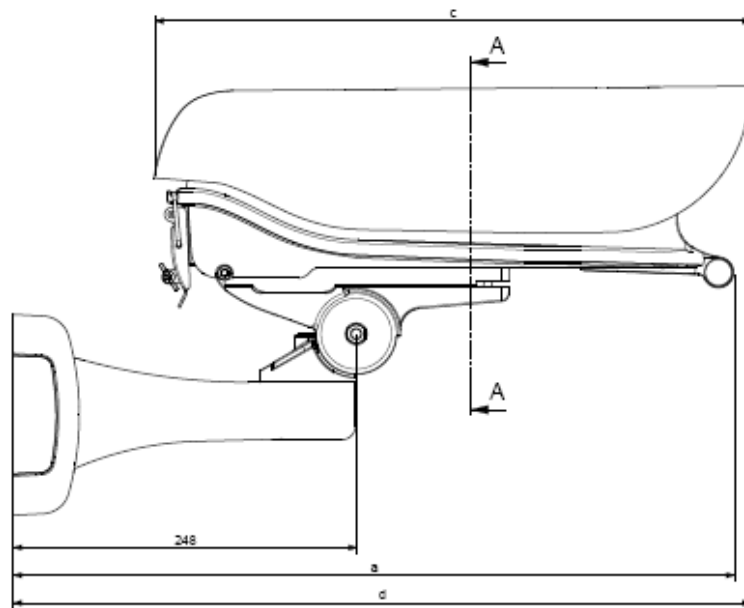
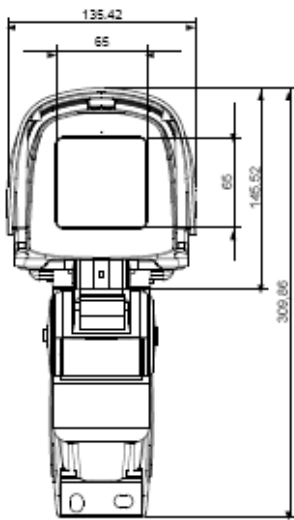
## ACCESSORIES

<b>HTR</b>	Heater with thermostat	
<b>VR</b>	Blower kit with thermostat	
<b>SSR</b>	Sunshield	
<b>VAR</b>	Vandal proof glass	
<b>PLUS</b>	Dedicated PoE camera module for digital cameras that only allow PoE feed. (HiPoE MKII PLUS) Available factory installed only	
<b>Injector</b>	Single Channel Hi-PoE Injector	

## RELATED PRODUCTS

<b>PA/1</b>	Pole mount adapter for one bracket	
<b>PA/2</b>	Pole mount adapter for two brackets	
<b>CM</b>	Corner mount adapter	
<b>BWRHYP1</b>	Hyperion One Adapter for LINEA R Camera Housing	
<b>HYP1</b>	Hyperion One	





SEZIONE A-A

		<b>270 mm</b>	
<b>a (mm)</b>		520.61	
<b>b (mm)</b>		270.00	Senza riscaldamento <i>With no heater</i>
<b>c (mm)</b>		430	
<b>d (mm)</b>		532.34	
		2.79	Peso della custodia (Kg) <i>Weight of the housing (Kg)</i>
		0.89	Peso del tettuccio (Kg) <i>Weight of the sunshield (Kg)</i>
	1.10		Peso del supporto e snodo (Kg) <i>Weight of the bracket and swivel head (Kg)</i>



**tekno system**<sup>®</sup>  
Italian design for CCTV since 1979

Tekno System S.p.A.  
Via Rostoncello, 1 - 36010 Carrè - Italy  
Phone: +39 0445 314324 | Fax: +39 0445 314319  
Email: [info@teknoystem.eu](mailto:info@teknoystem.eu) | Web: [www.teknoystem.eu](http://www.teknoystem.eu)

rev. 180211

Page 3 / 4

## MODELS

ORDER CODE	Wall bracket	Sunshield	IP Rate	Heater 12-24V~	Blower 12VDC	Hi-Poe Power Supply 12VDC 1,75A	Hi-Poe MKII Splitter	HiPoE MKII PLUS Splitter
KITRP/270 Hi-PoE +HT+V11/12	●	●	IP54	●	●	●	●	
KITRP/270 Hi-PoE +HT	●	●	IP66	●		●	●	
KITRP/270 Hi-PoE+PLUS+HT+V11/12	●	●	IP54	●	●	●	●	●
KITRP/270 Hi-PoE +PLUS+HT	●	●	IP66	●		●	●	●

## SPECIFICATIONS

<p><b>General</b></p> <ul style="list-style-type: none"> <li>Die-cast aluminium</li> <li>RAL9002 Polyester powder coating</li> <li>Supplied with: instruction manual, silicagel bag, 1/4" camera fixing screw, BW9H6 wall bracket and swivel head (KIT RA) or BWPHP (KIT RP) or CBRH6 KIT RC</li> </ul>	<p><b>Electrical</b></p> <ul style="list-style-type: none"> <li>Heater Thermostat <math>T_{on} 15^{\circ}\text{C} (59^{\circ}\text{F}) \pm 5^{\circ}\text{C} T_{off} 22^{\circ}\text{C} (71.6^{\circ}\text{F}) \pm 4^{\circ}\text{C}</math></li> <li>Heater PTC 12V 7W</li> <li>Blower Thermostat <math>T_{on} 37^{\circ}\text{C} (98.6^{\circ}\text{F}) \pm 4^{\circ}\text{C} T_{off} 27^{\circ}\text{C}(80.6^{\circ}\text{F}) \pm 3^{\circ}\text{C}</math></li> <li>Blower with double air filter, consumption 12VDC 1W (only Blower Kit version)</li> <li>Punch Down Terminal fast connection</li> </ul> <p><b>HiPoE MKII 12VDC 24W splitter with integrated heater and blower thermostats, compatible with:</b></p> <ul style="list-style-type: none"> <li>Microsemi/PowerDsine HiPoE Multi Port 7000 Midspan series (6, 12, 24 port version)</li> <li>Phihong High Power Gigabit PoE Midspan series</li> </ul> <ul style="list-style-type: none"> <li>Gigabit compatible</li> <li>Compliant with IEEE802.3at draft</li> <li>Warning:           <ul style="list-style-type: none"> <li>The camera housing is compatible only with camera with output selectable 12Vdc or 14,5Vdc voltage feeding</li> <li>The splitter Ethernet Output is not PoE</li> </ul> </li> </ul> <p><b>HiPoE MKII PLUS</b></p> <ul style="list-style-type: none"> <li>dedicated PoE injector IEEE 802.3af compliant built in for digital cameras that only allow PoE feed.</li> <li>the two terminal blocks marked +POWER- will be not used.</li> </ul>
<p><b>Mechanical</b></p> <ul style="list-style-type: none"> <li>Internal usable area: 75 x 75mm (2.95 x 2.95in)</li> <li>Internal usable length: 242mm (9.53in)</li> <li>Glass Windows 65x65x3mm</li> <li>No. 4 cable glands M16x1,5 (KIT RA, KIT RAC); No. 4 internal cable glands for cables from 6 to 10 mm diam. (KIT RP)</li> </ul>	<p><b>Environment</b></p> <ul style="list-style-type: none"> <li>Indoor / Outdoor applications</li> <li>Temperature range with heater: <math>-20^{\circ}\text{C} (-4^{\circ}\text{F})</math> up to <math>+50^{\circ}\text{C} (+122^{\circ}\text{F})</math></li> <li>IP66 weatherproof rating (according to EN60529) (IP44 Blower Kit version)</li> <li>CE according to EN61000-6-3, EN60950, EN50130-4</li> <li>RoHS compliant</li> </ul>

Technical data and product features might be modified without any warning.

