

Switch.



 **Comelit**[®]
Passion. Technology. Design.





SWITCH

Featuring a minimalist and attractive style to complement modern architecture, the monolithic entrance panel is a single product encapsulating all the requirements and options of a simple and flexible set-up.



Mario
Est

STRONG

Designed in Italy and made using brushed **316 stainless steel** for durability and resistance, the Switch entrance panel allows you to create an almost **infinite range of solutions**. **1 to 33** buttons are distributed over 1, 2 or 3 columns and a flush- or surface-mounted box (available to purchase separately) adapts the product to suit all installation sites.

The **2.5 mm** thick plate is one of the thinnest available in this entire category and it's **IK08** rated, while retaining the **convenience** of the removable nameplates on the front cover.









VERSATILE

The same front cover is used for **digital 2-wire** systems and **ViP** systems alike. In fact, the **audio or audio/video** module is sold separately; it is particularly interesting to note how an audio entrance panel can be converted into an audio/video panel by **replacing** the module itself and the front grille (supplied with the product for both solutions *Ref. 1250U*).

The Switch entrance panel may be equipped with **accessories** that can be adapted with additional modules, such as **access control** (SimpleKey), **induction circuits** (T-Coil), a **keypad**, or **blank additional panels** to be engraved with apartment names or street numbers.



1621

1621VC

1622

1622VC

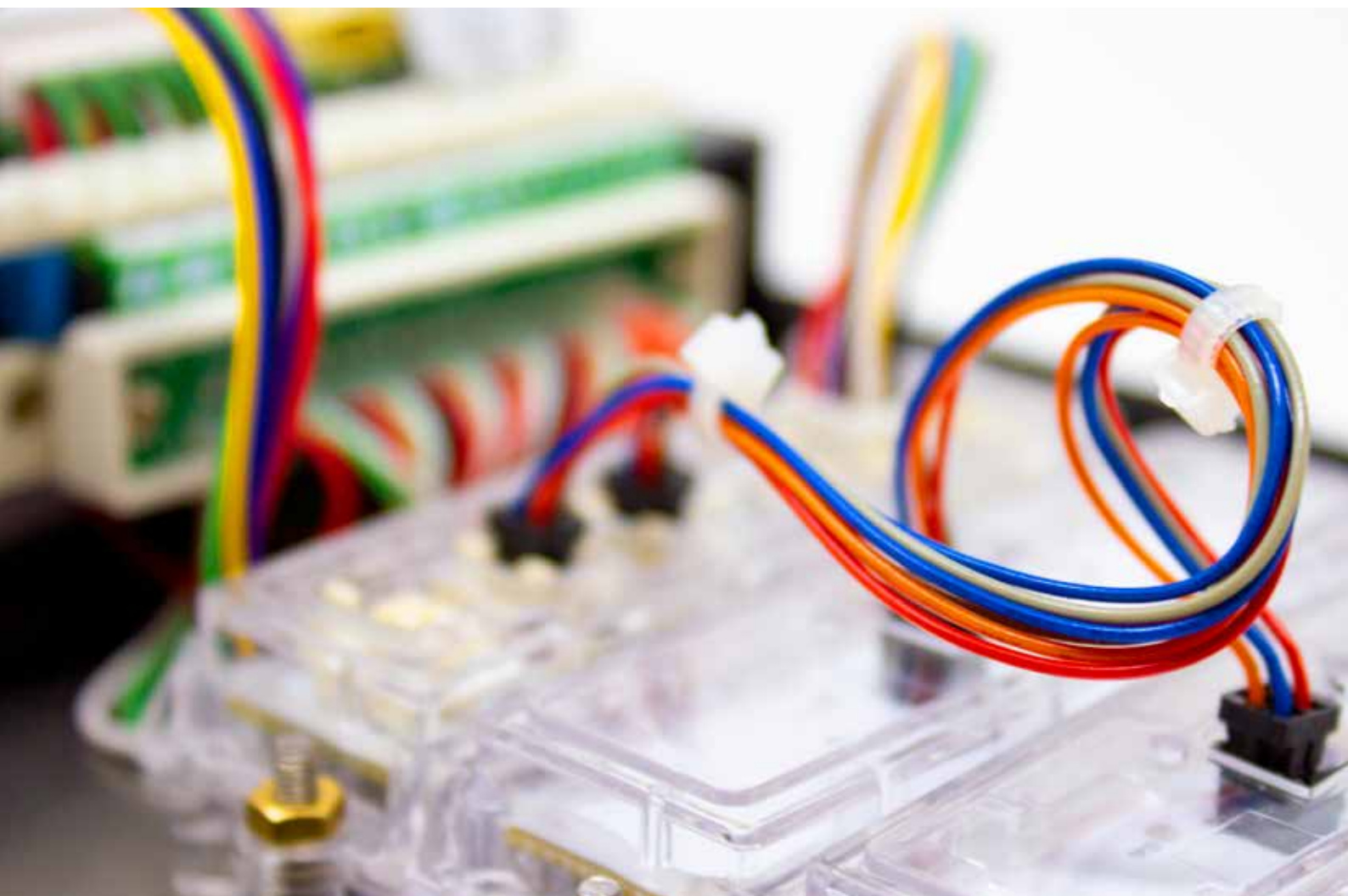
1682

1682HVC

4680C

4681

4682HD



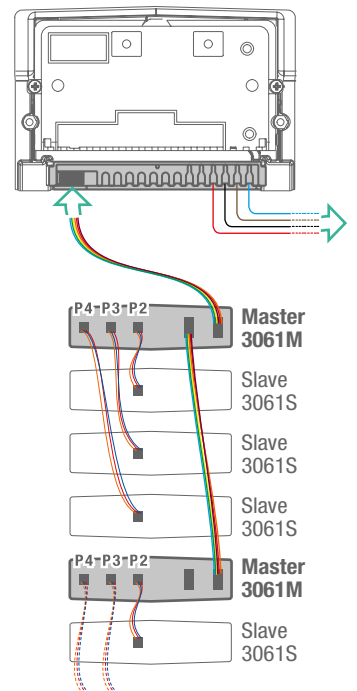


SIMPLE

The Switch entrance panel comes complete with **pre-fitted, pre-wired** buttons **designed** and **manufactured** in-house (ref. 3061M and 3061S) which require no other work or button interface.

Button 3061 works as a **Master (M)** for all **2-wire digital and ViP systems**, with the pairing of no more than three **Slave (S)** buttons and expansion by means of other Master buttons with their own paired Slaves. The button is made using stainless steel, for quality and durability. Even the tiniest details are carefully designed so that the installed component remains flush with the entrance panel, while retaining the option of changing the nameplate from the front cover without having to remove or open the external unit.

★
PATENT
PENDING
★



→ To connect



- Audio and audio/video entrance panel in AISI 316 steel.
- Brushed finish.
- Available in versions with 1 to 33 buttons.
- Smart call buttons (3061M - 3061S).
- Protection rating IK08
- Voice messages and red LED light indications.
- Entrance panel to be finished with audio or audio/video module depending on wiring.
- Pre-connected Smart buttons with nameplates that can be replaced even after the entrance panel has been installed.
- Nameplates with white LED backlighting.
- Sturdy and extremely durable.
- Flush- or surface-mounted external unit.
- 2.5 mm thick plate.







Amy Beerhove

Morgan Warhol
Lisa Martinez

Leonard Reese
Anna Pollock

Comelit



1 COLUMN

IX0101
IX0102
IX0103
IX0104

IX0101KP

IX0101CO

IX0105
IX0106
IX0107
IX0108

IX0102KP
IX0103KP
IX0104KP

IX0102CO
IX0103CO
IX0104CO

IX0109
IX0110
IX0111
IX0112

	1-2-3-4	1	1	5-6-7-8	2-3-4	2-3-4	9-10-11-12
width	150 mm						
height	262.7 mm			369.1 mm		475.5 mm	

2 COLUMNS

IX0212
IX0214
IX0216
IX0218

IX0220
IX0222
IX0224
IX0226

	12-14-16-18	20-22-24-26
width	216,4 mm	
height	395.7 mm	502.1 mm

3 COLUMNS

IX0324
IX0327
IX0330
IX0333

	24-27-30-33
width	302,9 mm
height	448.9 mm

KITS

KVS2001KP

KVS2001

KVS2011KP

KVS2011



COMPONENTS

FRONT PANEL



Codes	N. Buttons	N. Columns	Dimensions	Flush M. Boxes	Surf. M. Casings
IX0101	1	1	262,7x150x2,5 mm	IX9150	IX9160
IX0102	2	1	262,7x150x2,5 mm	IX9150	IX9160
IX0103	3	1	262,7x150x2,5 mm	IX9150	IX9160
IX0104	4	1	262,7x150x2,5 mm	IX9150	IX9160
IX0105	5	1	369,1x150x2,5 mm	IX9151	IX9161
IX0106	6	1	369,1x150x2,5 mm	IX9151	IX9161
IX0107	7	1	369,1x150x2,5 mm	IX9151	IX9161
IX0108	8	1	369,1x150x2,5 mm	IX9151	IX9161
IX0109	9	1	475,5x150x2,5 mm	IX9152	IX9162
IX0110	10	1	475,5x150x2,5 mm	IX9152	IX9162
IX0111	11	1	475,5x150x2,5 mm	IX9152	IX9162
IX0112	12	1	475,5x150x2,5 mm	IX9152	IX9162
IX0212	12	2	395,7x216,4x2,5 mm	IX9153	IX9163
IX0214	14	2	395,7x216,4x2,5 mm	IX9153	IX9163
IX0216	16	2	395,7x216,4x2,5 mm	IX9153	IX9163
IX0218	18	2	395,7x216,4x2,5 mm	IX9153	IX9163
IX0220	20	2	502,1x216,4x2,5 mm	IX9154	IX9164
IX0222	22	2	502,1x216,4x2,5 mm	IX9154	IX9164
IX0224	24	2	502,1x216,4x2,5 mm	IX9154	IX9164
IX0226	26	2	502,1x216,4x2,5 mm	IX9154	IX9164
IX0324	24	3	448,9x302,9x2,5 mm	IX9155	IX9165
IX0327	27	3	448,9x302,9x2,5 mm	IX9155	IX9165
IX0330	30	3	448,9x302,9x2,5 mm	IX9155	IX9165
IX0333	33	3	448,9x302,9x2,5 mm	IX9155	IX9165

KEYPAD



Codes	N. Buttons	N. Columns	Dimensions	Flush M. Boxes	Surf. M. Casings
IX0101KP	1	1	262,7x150x2,5 mm	IX9150	IX9160
IX0102KP	2	1	369,1x150x2,5 mm	IX9151	IX9161
IX0103KP	3	1	369,1x150x2,5 mm	IX9151	IX9161
IX0104KP	4	1	369,1x150x2,5 mm	IX9151	IX9161

CUTOUT



Codes	N. Buttons	N. Columns	Dimensions	Flush M. Boxes	Surf. M. Casings
IX0101CO	1	1	262,7x150x2,5 mm	IX9150	IX9160
IX0102CO	2	1	369,1x150x2,5 mm	IX9151	IX9161
IX0103CO	3	1	369,1x150x2,5 mm	IX9151	IX9161
IX0104CO	4	1	369,1x150x2,5 mm	IX9151	IX9161



AUDIO - AUDIO/VIDEO MODULES

1621	SIMPLEBUS 2W AUDIO UNIT WITH LED, IKALL SERIES	Speaker unit for 2-wire systems complete with terminal block and audio control with echo-cancelling, sealed-unit loudspeaker, electret microphone and front-mounted loudspeaker volume control. Complete with microprocessor and 8-position dip switch for programming calls to users. On-board electronic lock-release function (3A) plus C, NC, NO contacts for 10A relay. Timed lock-release input and door open indication. Compatible with power supply unit art. 1210. Dimensions: 102x55x38 mm	②
1621VC	SIMPLEBUS 2W IKALL COLOUR A/V UNIT, REMOTE CAMERA	Speaker unit for 2-wire systems complete with terminal block and audio control with echo-cancelling, sealed-unit loudspeaker, electret microphone and front-mounted loudspeaker volume control. Allows use of external PAL colour cameras. Complete with microprocessor and 8-position dip switch for programming calls to users. On-board electronic lock-release function (3A) plus C, NC, NO contacts for 10A relay. Timed lock-release input and door open indication. Compatible with power supply unit art. 1210. Dimensions: 102x55x38 mm.	②
1622	IKALL SIMPLEBUS AUDIO SPEAKER	Audio speaker unit complete with terminal block and digital audio management system with Echo-cancelling, watertight loudspeaker and electret microphone, loudspeaker volume can be adjusted from the front. Complete with microprocessor and DIP switch with 8 positions for programming user calls. 33Vdc from power supply unit part. 1595. On-board electronic lock-release function (3A), plus a 10A relay. Timed lock-release inputs and door open indication.. For use in modules part. 33400, 33401 and 33402. Compatible with all SBTOP functions and products. Dimensions: 102x55x38 mm.	
1622VC	IKALL REMOTE COLOUR CAMERA AUDIO UNIT SB2 COLOUR	Module which allows modulation and transmission of a composite video signal from an external Colour CCTV camera. Power supply: 33vDC. Compatible with all SBTOP functions and products. Dimensions: 102x55x35 mm	
1682	IKALL VIP AUDIO ONLY SPEAKER	Audio-video unit for ViP system including terminal block complete with front-adjustable mini lens colour camera, LED camera lighting. Complete with terminal block and digital audio management system with Echo-cancelling, watertight loudspeaker and electret microphone, loudspeaker volume adjustable from the front. For fitting in modules: part. 33400, 33401, 33402. Dimensions: 102x55x38 mm.	
1682HVC	IKALL SERIES AUDIO MOD. FOR REM.COL.CAM. VIP. H264	ViP system audio unit with facility for connection of a remote camera with 12Vdc power supply. Complete with terminal block and digital audio management system with Echo-cancelling, watertight loudspeaker and electret microphone, loudspeaker volume adjustable from the front. Dimensions: 102x55x38 mm. Compatible with H.264 video format.	
4680C	IKALL SERIES A/V COLOR UNIT. SIMPLEBUS	Audio/video unit with terminal block, complete with front-adjustable 1/3" CCD colour camera and LED camera illumination. Digital audio management system with Echo-cancelling, watertight loudspeaker and electret microphone, loudspeaker volume can be adjusted from the front. Complete with microprocessor and DIP switch with 8 positions for programming calls to users. Audiovisual indications to comply with DDA via programming. 33Vdc power supply via power supply unit part. 1595. On-board electronic lock-release function (3A), plus C, NC, NO contacts for 10A relay and timed lock-release input and door open indication. For use in modules part. 33410, 33411 and 33412. Compatible with all SBTOP functions and products. Dimensions: 102x55x38 mm.	
4681	COLOUR IKALL A/V UNIT. S2	Colour audio-video unit for 2-wire systems with terminal block complete with directable colour camera with front adjustment, LED camera lighting. Complete with terminal block and audio control with echo-cancelling, sealed-unit loudspeaker, electret microphone and front-mounted loudspeaker volume control. Complete with microprocessor and 8-position dip switch for programming calls to users. Programmable audiovisual functions for users with disabilities. On-board electronic lock-release function (3A) plus C, NC, NO contacts for 10A relay. Timed lock-release input and door open indication. Compatible with power supply unit art. 1210. Dimensions: 102x55x38 mm.	②
4682HD	HD COLOUR AUDIO/VIDEO UNIT, IKALL SERIES. VIP	ViP system audio-video unit with terminal block, complete with colour camera. Resolution 1280x720 pixels. Recording angle 110° (H) - 80° (V). IR led camera lighting. Complete with terminal block and digital audio management system with Echo-cancelling, watertight loudspeaker and electrets microphone; loudspeaker volume can be adjusted from the front. Programmable audio visual functions for users with disabilities. Standard POE audio-video unit, but if necessary 33 VDC power supply can be used the power supply unit art. 1595. Compatible with H.264 video format. Dimensions: 102x55x38 mm.	





FLUSH-MOUNT BOXES



IX9150 **FLUSH-MOUNTED BOX FOR FRONT PLATE W/ 1-2-3-4 BUTTONS**
Flush-mounted box for entrance panels art. IX0101, IX0102, IX0103 and IX0104 with 1-2-3-4 buttons.
Dimensions: 124x236.7x56 mm.

IX9151 **FLUSH-MOUNTED BOX FOR FRONT PLATE W/ 5-6-7-8 BUTTONS**
Flush-mounted box for entrance panels art. IX0105, IX0106, IX0107 and IX0108 with 5-6-7-8 buttons.
Dimensions: 124x343.1x56 mm.

IX9152 **FLUSH-MOUNTED BOX FOR FRONT PLATE W/ 9-10-11-12**
Flush-mounted box for entrance panels art. IX0109, IX0110, IX0111 and IX0112 with 9-10-11-12 buttons.
Dimensions: 124x449.5x56 mm.



IX9153 **FLUSH-MOUNTED BOX FOR FRONT PLATE W/ 12-14-16-18**
Flush-mounted box for entrance panels art. IX0212, IX0214, IX0216 and IX0218 with 12-14-16-18 buttons.
Dimensions: 190.4x369.7x56 mm.

IX9154 **FLUSH-MOUNTED BOX FOR FRONT PLATE W/ 20-22-24-26**
Flush-mounted box for entrance panels art. IX0220, IX0222, IX0224 and IX0226 with 20-22-24-26 buttons.
Dimensions: 190.4x476.1x56 mm.



IX9155 **FLUSH-MOUNTED BOX FOR FRONT PLATE W/ 24-27-30-33**
Flush-mounted box for entrance panels art. IX0324, IX0327, IX0330 and IX0333 with 24-27-30-33 buttons.
Dimensions: 276.9x422.9x56 mm.

SURFACE-MOUNT CASINGS



IX9160 **HOUSING FOR FRONT PLATE W/ 1-2-3-4 BUTTONS**
Surface-mounted casing for entrance panels art. IX0101, IX0102, IX0103 and IX0104 with 1-2-3-4 buttons.

IX9161 **HOUSING FOR FRONT PLATE W/ 5-6-7-8 BUTTONS**
Surface-mounted casing for entrance panels art. IX0105, IX0106, IX0107 and IX0108 with 5-6-7-8 buttons.

IX9162 **HOUSING FOR FRONT PLATE W/ 9-10-11-12 BUTTONS**
Surface-mounted casing for entrance panels art. IX0109, IX0110, IX0111 and IX0112 with 9-10-11-12 buttons.



IX9163 **HOUSING FOR FRONT PLATE W/ 12-14-16-18 BUTTONS**
Surface-mounted casing for entrance panels art. IX0212, IX0214, IX0216 and IX0218 with 12-14-16-18 buttons.

IX9164 **HOUSING FOR FRONT PLATE W/ 20-22-24-26 BUTTONS**
Surface-mounted casing for entrance panels art. IX0220, IX0222, IX0224 and IX0226 with 20-22-24-26 buttons.



IX9165 **HOUSING FOR FRONT PLATE W/ 24-27-30-33 BUTTONS**
Surface-mounted casing for entrance panels art. IX0324, IX0327, IX0330 and IX0333 with 24-27-30-33 buttons.



ADDITIONAL FRONT COVERS

IX9100 **BLANK FRONT PLATE W/ BUTTONS IN 1 COLUMN**
Blank front plate with stainless steel finish for Switch entrance panels with 1 button column.
Dimensions: 150x129.5x2.5 mm.



IX9200 **BLANK FRONT PLATE W/ BUTTONS IN 2 COLUMNS**
Blank front plate with stainless steel finish for Switch entrance panels with 2 button columns.
Dimensions: 216.4x129.5x2.5 mm.

IX9300 **BLANK FRONT PLATE W/ BUTTONS IN 3 COLUMNS**
Blank front plate with stainless steel finish for Switch entrance panels with 3 button columns.
Dimensions: 302.9x129.5x2.5 mm.

IX9101 **ELECTRONIC KEY FRONT PLATE - 1 COLUMN**
Digital electronic key front plate with LED keypad backlighting and stainless steel finish, for Switch entrance panels with 1 button column. Allows the operation of electric door locks or other devices.
Dimensions: 150x129.5x2.5 mm.



IX9201 **ELECTRONIC KEY FRONT PLATE - 2 COLUMNS**
ELECTRONIC KEY FRONT PLATE - 2 COLUMNS Digital electronic key front plate with LED keypad backlighting and stainless steel finish, for Switch entrance panels with 2 button columns. Allows the operation of electric door locks or other devices.
Dimensions: 216.4x129.5x2.5 mm.

IX9301 **ELECTRONIC KEY FRONT PLATE - 3 COLUMNS**
Digital electronic key front plate with LED keypad backlighting and stainless steel finish, for Switch entrance panels with 3 button columns. Allows the operation of electric door locks or other devices.
Dimensions: 302.9x129.5x2.5 mm.

IX9102 **SIMPLEKEY FACILITY FRONT PLATE - 1 COLUMN**
Front plate designed for use with Simplekey reader, with stainless steel finish for Switch entrance panels with 1 button column. Dimensions: 150x129.5x2.5 mm.



IX9202 **SIMPLEKEY FACILITY FRONT PLATE - 2 COLUMNS**
Front plate designed for use with Simplekey reader, with stainless steel finish for Switch entrance panels with 2 button columns. Dimensions: 216.4x129.5x2.5 mm.

IX9302 **SIMPLEKEY FACILITY FRONT PLATE - 3 COLUMNS**
Front plate designed for use with Simplekey reader, with stainless steel finish for Switch entrance panels with 3 button columns. Dimensions: 302.9x129.5x2.5 mm.

IX9103 **VIGIK FACILITY FRONT PLATE - 1 COLUMN**
Front plate designed for use with Vigik reader, with stainless steel finish for Switch entrance panels with 1 button column. Dimensions: 150x129.5x2.5 mm.



IX9203 **VIGIK FACILITY FRONT PLATE - 2 COLUMNS**
Front plate designed for use with Vigik reader, with stainless steel finish for Switch entrance panels with 2 button columns. Dimensions: 216.4x129.5x2.5 mm.

IX9303 **VIGIK FACILITY FRONT PLATE - 3 COLUMNS**
Front plate designed for use with Vigik reader, with stainless steel finish for Switch entrance panels with 3 button columns. Dimensions: 302.9x129.5x2.5 mm.



IX9104 **MAGNETIC INDUCTION FRONT PLATE - 1 COLUMN**
Front plate for Switch entrance panels with 1 button column, featuring an audio induction loop which allows hearing impaired users to listen to the audio conversation on the external unit via their own hearing aid device (with T switch). Stainless steel finish. Dimensions: 150x129.5x2.5 mm.



IX9204 **MAGNETIC INDUCTION FRONT PLATE - 2 COLUMNS**
Front plate for Switch entrance panels with 2 button columns, featuring an audio induction loop which allows hearing impaired users to listen to the audio conversation on the external unit via their own hearing aid device (with T switch). Stainless steel finish. Dimensions: 216.4x129.5x2.5 mm.

IX9304 **MAGNETIC INDUCTION FRONT PLATE - 3 COLUMNS**
Front plate for Switch entrance panels with 3 button columns, featuring an audio induction loop which allows hard-of-hearing users to listen to the audio conversation on the external unit via their own hearing aid device (with T switch). Stainless steel finish. Dimensions: 302.9x129.5x2.5 mm.

FLUSH-MOUNT BOXES FOR ADDITIONAL FRONT COVERS

IX9156 **FLUSH-MOUNTED BOX FOR FRONT PLATE W/ACCESS. 1 COLUMN**
Flush-mounted box for front plate accessory for Switch series entrance panels with 1 column. Dimensions: 124x110.5x55 mm.



IX9157 **FLUSH-MOUNTED BOX FOR FRONT PLATE W/ACCESS. 2 COLUMNS**
Flush-mounted box for front plate accessory for Switch series entrance panels with 2 columns. Dimensions: 190.4x110.5x55 mm.

IX9158 **FLUSH-MOUNTED BOX FOR FRONT PLATE W/ACCESS. 3 COLUMNS**
Flush-mounted box for front plate accessory for Switch series entrance panels with 3 columns. Dimensions: 276.9x110.5x55 mm.

SURFACE-MOUNT CASINGS FOR ADDITIONAL FRONT COVERS

IX9160A **HOUSING FOR FRONT PLATE W/ 1-2-3-4 BUTTONS + ACC**
Surface-mounted casing accessory for entrance panels art. IX0101, IX0102, IX0103 and IX0104 with 1-2-3-4 buttons.



IX9161A **HOUSING FOR FRONT PLATE W/ 5-6-7-8 BUTTONS + ACC**
Surface-mounted casing accessory for entrance panels art. IX0105, IX0106, IX0107 and IX0108 with 5-6-7-8 buttons.

IX9162A **HOUSING FOR FRONT PLATE W/ 9-10-11-12 BUTTONS +ACC**
Surface-mounted casing accessory for entrance panels art. IX0109, IX0110, IX0111 and IX0112 with 9-10-11-12 buttons.

IX9163A **HOUSING FOR FRONT PLATE W/ 12-14-16-18 BUTTONS+ACC**
Surface-mounted casing accessory for entrance panels art. IX0212, IX0214, IX0216 and IX0218 with 12-14-16-18 buttons.

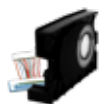


IX9164A **HOUSING FOR FRONT PLATE W/ 20-22-24-26 BUTTONS+ACC**
Surface-mounted casing accessory for entrance panels art. IX0220, IX0222, IX0224 and IX0226 with 20-22-24-26 buttons.

IX9165A **HOUSING FOR FRONT PLATE W/ 24-27-30-33 BUTTONS+ACC**
Surface-mounted casing accessory for entrance panels art. IX0324, IX0327, IX0330 and IX0333 with 24-27-30-33 buttons.



ACCESSORIES



1250U AUDIO OR AUDIO/VIDEO UNIT ADAPTER



3061M **MASTER BUTTON WITH NAMEPLATE**
Master button that can be used in both 2-wire and ViP digital systems, consisting of a nameplate and a steel pressure call button. The brightness of the white LED is adjustable on the back. The installation is foreseen on 2.5 mm thick metal plates.



3061S **SLAVE BUTTON WITH NAMEPLATE**
Slave button that can be used in both 2-wire and ViP digital systems, consisting of a nameplate and a steel pressure call button. The brightness of the white LED is adjustable on the back. The installation is foreseen on 2.5 mm thick metal plates.



3058 **NAMEPLATE FOR BUTTON 3061M-3061S-3061A**
Spare nameplate for button 3061M - 3061S - 3061A. Pack of 5 units



3059 **LABEL SHEETS FOR 30161 AND INOX ENTRANCE PANEL**

KITS



KVS2001 **SWITCH VIDEO KIT - MINI HF. 2 WIRES**
Video door entry kit consisting of n° 1 Mini hands-free monitor art. 6721W, 1 branch terminal art.1214 / 2C, n° 1 termination terminal art.1216, n° 1 power supply art. 1210, n° 1 pushbutton panel Switch series with 1 button art. IX0101 with relative flush-mounting box art. IX9150 and n° 1 colour audio / video unit for 2-wire digital system



KVS2011 **SWITCH VIDEO KIT - MINI HF WIFI. 2 WIRES**
Video door entry kit consisting of n° 1 Mini hands-free Wi-Fi monitor art. 6741W, 1 branch terminal art.1214 / 2C, n° 1 termination terminal art.1216, n° 1 power supply art. 1210, n° 1 pushbutton panel Switch series with 1 button art. IX0101 with relative flush-mounting box art. IX9150 and n° 1 colour audio / video unit for 2-wire digital system



KVS2001KP **SWITCH VIDEO KEYPAD KIT - MINI HF. 2 WIRES**
Video door entry kit consisting of n° 1 Mini hands-free monitor art. 6721W, 1 branch terminal art.1214 / 2C, n° 1 termination terminal art. 1216, n° 1 power supply art. 1210, n° 1 pushbutton panel Switch series with 1 button complete with electronic key module art. IX0101KP with relative flush-mounting box art. IX9150, n° 1 adapter art. SK9015 and n° 1 colour audio / video unit for 2-wire digital system



KVS2011KP **SWITCH VIDEO KEYPAD KIT - MINI HF WIFI 2 WIRES**
Video door entry kit consisting of n° 1 Mini hands-free Wi-Fi monitor art. 6741W, 1 branch terminal art.1214 / 2C, n° 1 termination terminal art.1216, n° 1 power supply art. 1210, n° 1 pushbutton panel Switch series with 1 button complete with electronic key module art. IX0101KP with relative flush-mounting box art. IX9150, n° 1 adapter art. SK9015 and n° 1 colour audio / video unit for 2-wire digital system

cod. 2G32000852
8 023903 388275

www.comelitgroup.com



The brands and trade names cited in this publication are the property of their respective owners.
Product dimensions derived from the images are purely indicative.